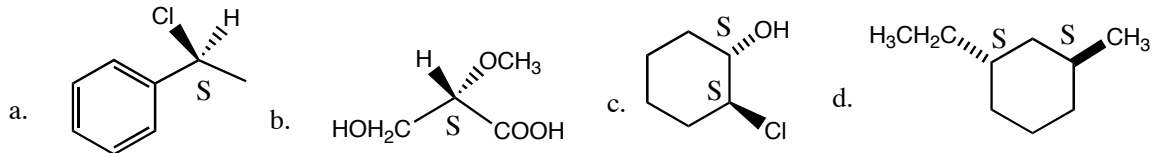
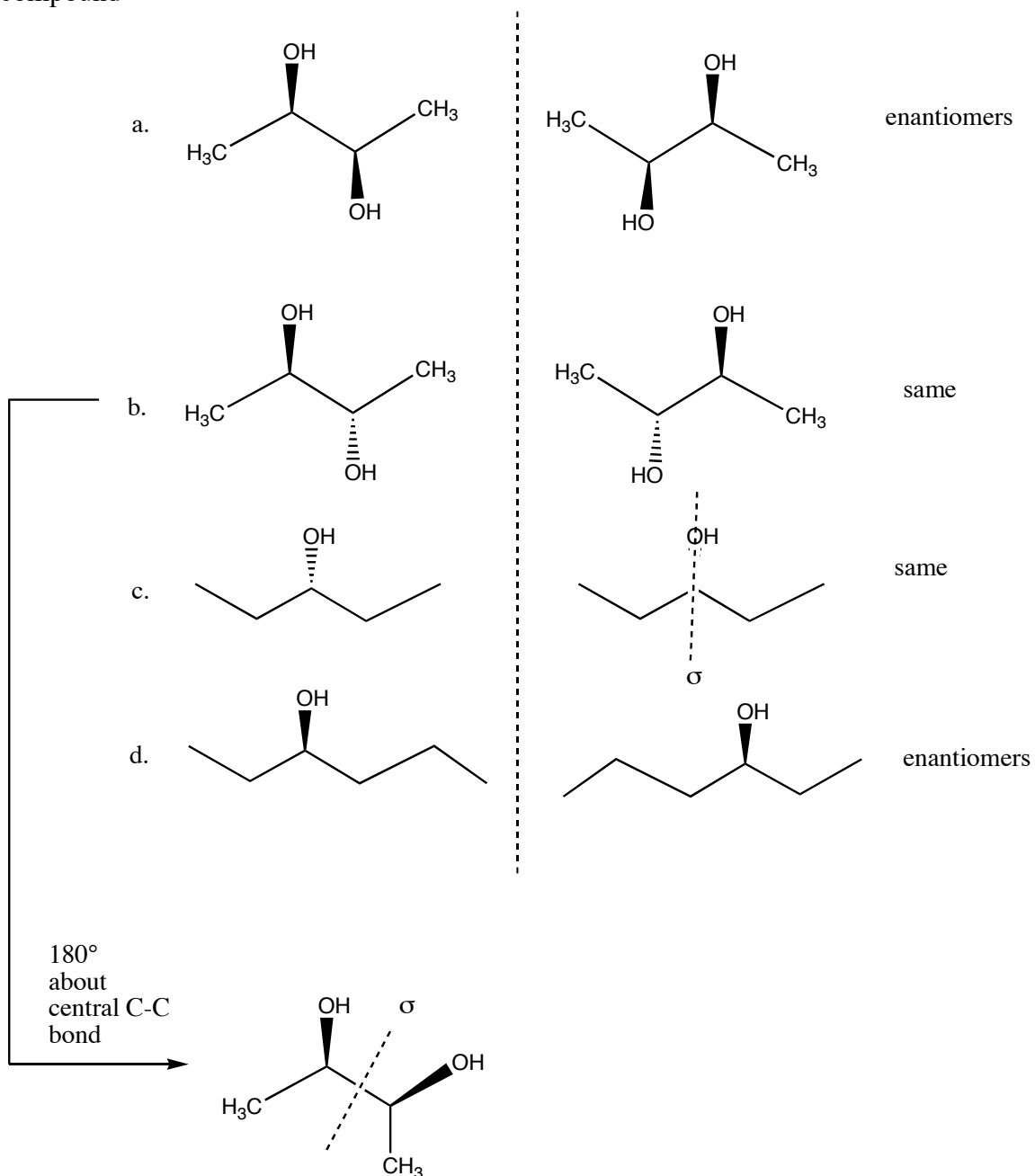


Additional Problems for practice:

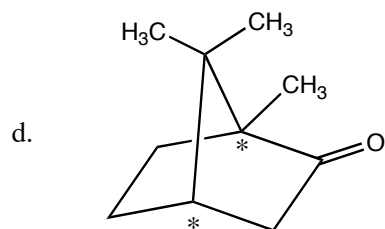
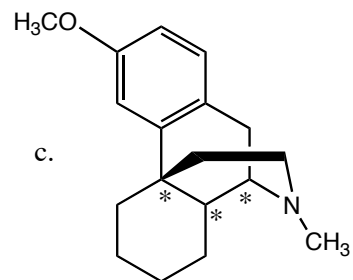
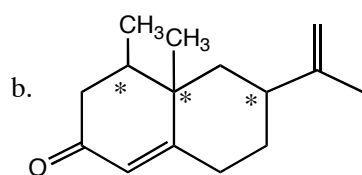
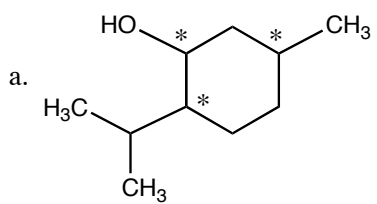
1.) Assign R, S configurations to each chiral center in these molecules:



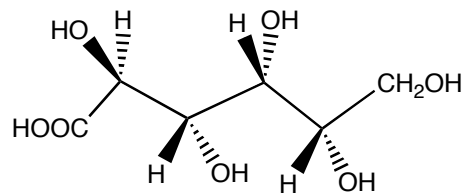
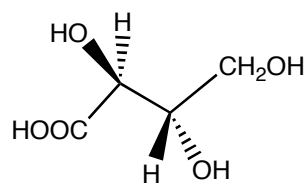
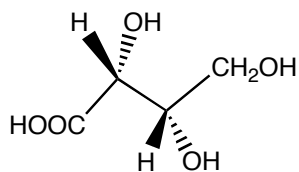
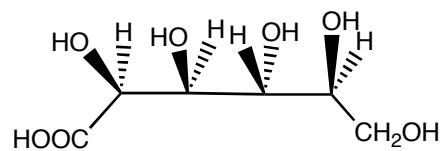
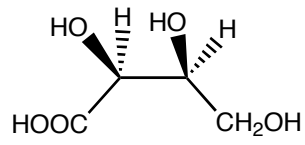
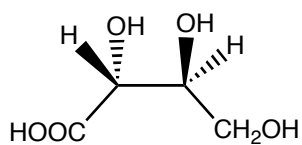
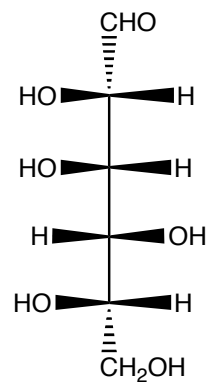
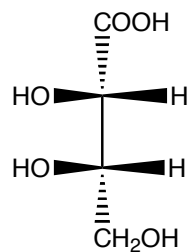
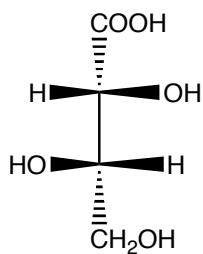
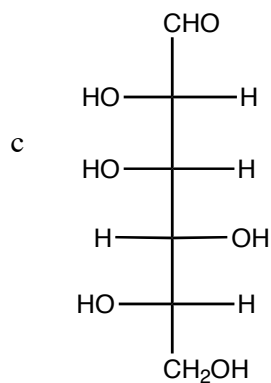
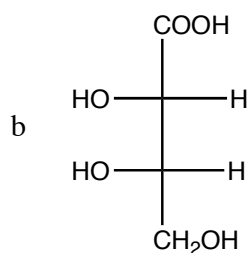
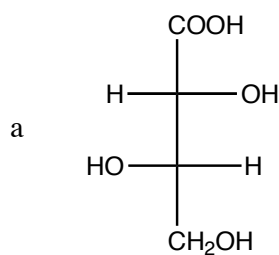
2.) Draw the mirror image of each of the following compounds, and state whether the mirror image is an enantiomer or is another view of the same compound



3. Identify all the chiral centers in the following molecules:



3.) Draw a three-dimensional picture that corresponds to each of the following Fisher projections:



4.) State the relationship between each of the following pairs of structures (identical, enantiomers, diastereomers, constitutional (structural) isomers, or different compounds that are not isomeric)

